



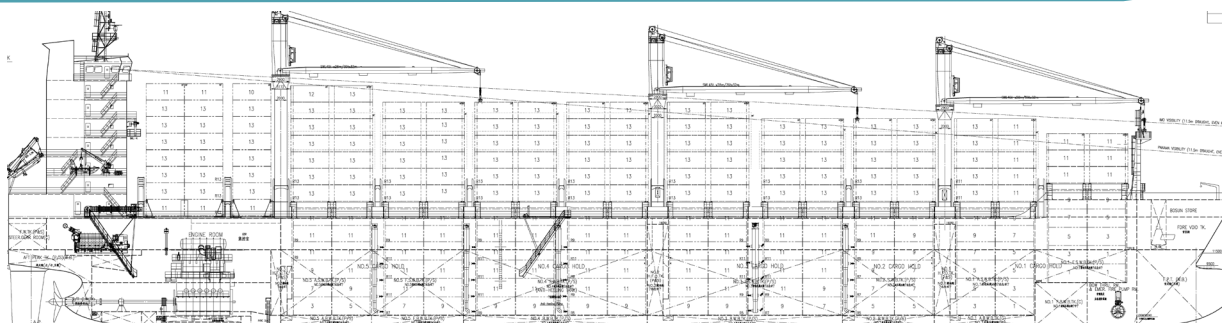
# MARIUS

2,500 TEU'S

IMO: 9802504 / Flag: RIF (French)



AVIC Weihai Shipyard, China  
Delivery April. 2018



## MAIN PARTICULARS

- Length over all ..... 195.00 m
- Length between pp ..... 186.26 m
- Breadth moulded ..... 32.20 m
- Depth to main deck ..... 17.00 m
- At Draught, design ..... 10.50 m
- Deadweight ..... 30,000 Ton
- At Draught, scantling ..... 11.50 m
- Deadweight ..... 35,000 Ton
- Service Speed ..... 19.00 knots

## CLASS

- Cellular Container Vessel - Type NORD ECO-2500 LR +100A1, Container Ship, ShipRight (SDA, FDA, CM, ACS(B)) \*IWS, LI, BoxMax(V,W), ECO(BWT, EEDI, IHM, OW), +LMC, UMS, NAV1, Descriptive notes: ShipRight(BWMP(T), SCM, SERS),CSA

## TANK CAPACITIES (100%)

- Heavy fuel oil ..... 2,400.00 m<sup>3</sup>
- Marine diesel oil ..... 325.00 m<sup>3</sup>
- Lubricating oil ..... 204.00 m<sup>3</sup>
- Fresh water ..... 250.00 m<sup>3</sup>
- Ballast water ..... 11,900.00 m<sup>3</sup>

## CARGO HANDLING

- Three (3) electro-hydraulic wire luffing type cranes
- SWL ..... 45mt @ 28m

## MAIN ENGINE

- MAN B&W 6G60ME-C9.5-TII (2 strokes)
- Total rated power ..... 13,400 kw (at a rated speed of 97 rpm)
- Fixed propeller right handed... 5 Blades - D=6800 mm
- Bow thruster ..... 1,100 Kw

## FUEL OIL CONSUMPTION OF MAIN ENGINE

- H.F.O.C at NCR appr. .... 48,5 MT/day
- Cruising range appr. .... 20,000 NM

## POWER SUPPLY

- Diesel Generators (HIMSEN) ..... 2 x 2,218 KWe
- Diesel Generators (HIMSEN) ..... 2 x 1,440 KWe
- Emergency Generator (SCANIA) ..... 1 x 125 kWe

## CARGO HATCH COVER

- Type : ..... Steel pontoon type
- Stack weight : ..... 60MT/20ft & 120MT/40ft
- Panel weight : ..... Hatch No1 60 MT/20' - 90 MT/40' ..... Hatch No2-9 90 MT/20' - 120MT/40'

## CONTAINER CAPACITIES

With max. number of Containers

### IMO visibility guideline

- On deck (8/7 tiers) ..... 1,550 TEU
- In hold ..... 956 TEU
- **Total** ..... **2,506 TEU**

- Rows max. in holds/on hatches ..... 11/13 Rows
- Tiers max. in holds/on hatches ..... 6/7 Tiers

El. Plugs (for reefer Container)

- On deck ..... 460 TEU
- In hold ..... 290 TEU

- Stability (8.8 T/TEU hetero, at Ts) ..... 2,297 TEU
- Stability (14T/TEU homo. at Ts) ..... 1,950 TEU

## NAVIGATION EQUIPMENT

- 2 - Radar Plant with ARPA
- 1 - Speed log dual axis
- 1 - Auto Pilot / 2 Gyro compass
- 2 - Sounders FURUNO
- 2 - DGPS navigator
- 2 - ECDIS

## TONNAGE

- GT ..... 28,433 UMS
- NT ..... 12,631 UMS